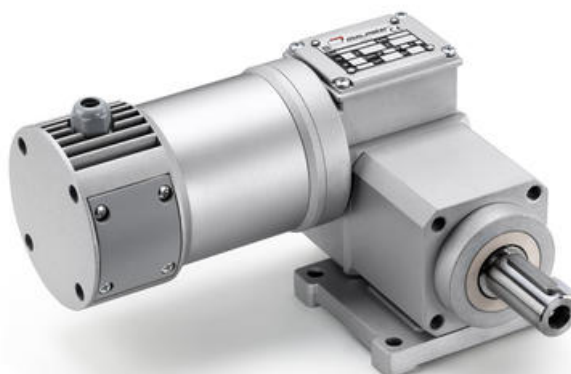


## MINIMOTOR - PCCE WORM GEAR MOTOR WITH PLANETARY REDUCTION

PCCE12MP3NB3-84

12V dc 84rpm 7.7Nm B3 mount

- 12 or 24VDC
- 75 to 150W delivered power
- Up to 82Nm rated torque
- B3 foot or B5 flange mounting
- IP65 as standard



### PRODUCT DESCRIPTION

High quality, designed from the ground up to IP65 rated compact gear motor.

Physically smaller than the majority of similar powered gear motors due to the use of high quality components in precision manufacturing.

Ideally suited to many applications, including label and packaging machines, conveyors, pharmaceutical and medical machinery

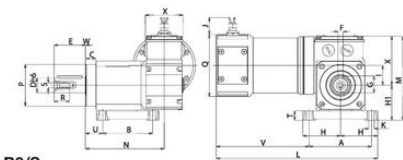
**MOTOR:** Direct current with permanent magnets, totally enclosed without external ventilation. Class F winding. 12 or 24 Vdc power supply. Absorbed power 230 W. IP65 protection according to CEI EN 60529

**GEAR UNIT:** Die-cast aluminium casing in the first reduction stage, with worm screw and steel casing in the second planetary stage, with three internal planetary gears. CARO bronze ring, hardness 120-160 HB. Hardened steel screws with ground threads rotating on ball and roller bearings. Lubrication with special long life oil. Sealing rings made in special rubber for high temperatures. 9 gear ratios (i) available, from 33.25 to 475. Rated torque 81 Nm. Version B3 or B5. B5/S left version - B5/D right version

[Please click here for 2D and 3D drawings](#)

### TECHNICAL DATA

Input voltage dc	12V
IP class	IP65
Nominal speed	84 rpm
Nominal torque	7,7 Nm
Output power	75 W
Rated current	9.6A A
Ratio	33.25:1



B3/S

Type Type Type Type	A	B	C	D	E	F	G	H	I	J	K	L	M	N	P	Q	R	S	T	U	V	W	X	Price Weight Pounds Per kg		
PCCE_MPMN	100	80	16	24	50	8	27	60	56	320	9	32	259	148	136	127	67	100	22	M8	15	28	60	1	60	8.050
PCCE_MPMN	100	80	16	24	50	8	27	60	56	320	9	32	259	199	136	127	67	100	22	M8	15	28	60	1	60	9.945

Electric motor

15.06.2017

Sensored motor

15.06.2017

Worm gearmotors

15.06.2017

Brushless servomotors

15.06.2017

Clean products

15.06.2017

Controls

15.06.2017

Please see product description above for 2D and 3D drawings